



Please find audition materials for the following ensembles (in order):

- Concert Orchestra
- Youth Philharmonic Orchestra
- Youth Symphony Orchestra

**If you are unsure which ensemble you should audition for, discuss the various excerpts for your instrument with your school music teacher or private lesson instructor.** They can help you decide which orchestra you are likely to find most challenging and fulfilling.

If you would like to be considered for more than one ensemble, please play the more advanced excerpt.

## CONCERT ORCHESTRA

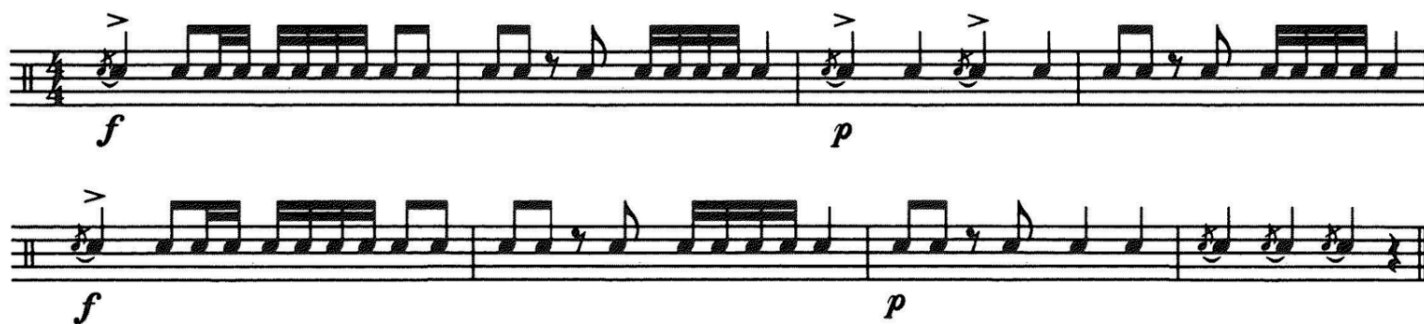
1. Prepare a solo or etude on the percussion instrument of your choice (snare drum, timpani, or keyboard percussion) that demonstrates your greatest skill, talent, and confidence. The solo/etude should be 1 minute in length. Etudes from All-State, District, SEIBA, SEISTA, or equivalent are acceptable.

2. Prepare the required excerpt(s) below.

### Bells



### Snare Drum



## YOUTH PHILHARMONIC ORCHESTRA

1. Prepare a solo or etude on the percussion instrument of your choice (snare drum, timpani, or keyboard percussion) that demonstrates your greatest skill, talent, and confidence. The solo/etude should be 1 minute in length. Etudes from All-State, District, SEIBA, SEISTA, or equivalent are acceptable.

2. **Prepare the required excerpt(s) below.**

3. Demonstrate techniques on the following instruments:

- Snare Drum: Play a multiple bounce (orchestral) roll at the performer's maximum, controlled speed from soft to loud to soft. Play a double stroke (rudimentary) roll from slow to fast to slow at a constant volume. Keyboard Percussion: Play 2-octave C and D major scales, ascending and descending, in eighth notes at quarter note = 100. Play a chromatic scale the full range of the instrument, ascending and descending, in eighth notes at quarter note = 100.
- Timpani: Perform a glissando roll ascending and descending.
- Crash Cymbals: Perform crashes at various volume levels.
- Tambourine: Perform shake and thumb rolls

Dmitri Shostakovich - Golden Age Ballet Suite, No. 3 "Polka", reh. 45 to 46.

XYLOPHONE

### No. 3 Polka

The image shows a musical score for the xylophone part of Dmitri Shostakovich's "No. 3 Polka" from the Golden Age Ballet Suite. The score is written on two staves. The first staff begins at measure 45, marked "Allegretto" with a tempo of 84 beats per minute. The key signature has one flat (B-flat), and the time signature is 2/4. The melody starts with a half note G4, followed by a quarter rest, then a quarter note F4. A "Solo" marking with an accent (>) and a forte (f) dynamic is placed over the first measure. The melody continues with eighth notes: G4, A4, Bb4, A4, G4, F4, E4, D4, C4, Bb3, A3, G3, F3, E3, D3, C3, Bb2, A2, G2, F2, E2, D2, C2, Bb1, A1, G1, F1, E1, D1, C1, Bb0, A0, G0, F0, E0, D0, C0, Bb-1, A-1, G-1, F-1, E-1, D-1, C-1, Bb-2, A-2, G-2, F-2, E-2, D-2, C-2, Bb-3, A-3, G-3, F-3, E-3, D-3, C-3, Bb-4, A-4, G-4, F-4, E-4, D-4, C-4, Bb-5, A-5, G-5, F-5, E-5, D-5, C-5, Bb-6, A-6, G-6, F-6, E-6, D-6, C-6, Bb-7, A-7, G-7, F-7, E-7, D-7, C-7, Bb-8, A-8, G-8, F-8, E-8, D-8, C-8, Bb-9, A-9, G-9, F-9, E-9, D-9, C-9, Bb-10, A-10, G-10, F-10, E-10, D-10, C-10, Bb-11, A-11, G-11, F-11, E-11, D-11, C-11, Bb-12, A-12, G-12, F-12, E-12, D-12, C-12, Bb-13, A-13, G-13, F-13, E-13, D-13, C-13, Bb-14, A-14, G-14, F-14, E-14, D-14, C-14, Bb-15, A-15, G-15, F-15, E-15, D-15, C-15, Bb-16, A-16, G-16, F-16, E-16, D-16, C-16, Bb-17, A-17, G-17, F-17, E-17, D-17, C-17, Bb-18, A-18, G-18, F-18, E-18, D-18, C-18, Bb-19, A-19, G-19, F-19, E-19, D-19, C-19, Bb-20, A-20, G-20, F-20, E-20, D-20, C-20, Bb-21, A-21, G-21, F-21, E-21, D-21, C-21, Bb-22, A-22, G-22, F-22, E-22, D-22, C-22, Bb-23, A-23, G-23, F-23, E-23, D-23, C-23, Bb-24, A-24, G-24, F-24, E-24, D-24, C-24, Bb-25, A-25, G-25, F-25, E-25, D-25, C-25, Bb-26, A-26, G-26, F-26, E-26, D-26, C-26, Bb-27, A-27, G-27, F-27, E-27, D-27, C-27, Bb-28, A-28, G-28, F-28, E-28, D-28, C-28, Bb-29, A-29, G-29, F-29, E-29, D-29, C-29, Bb-30, A-30, G-30, F-30, E-30, D-30, C-30, Bb-31, A-31, G-31, F-31, E-31, D-31, C-31, Bb-32, A-32, G-32, F-32, E-32, D-32, C-32, Bb-33, A-33, G-33, F-33, E-33, D-33, C-33, Bb-34, A-34, G-34, F-34, E-34, D-34, C-34, Bb-35, A-35, G-35, F-35, E-35, D-35, C-35, Bb-36, A-36, G-36, F-36, E-36, D-36, C-36, Bb-37, A-37, G-37, F-37, E-37, D-37, C-37, Bb-38, A-38, G-38, F-38, E-38, D-38, C-38, Bb-39, A-39, G-39, F-39, E-39, D-39, C-39, Bb-40, A-40, G-40, F-40, E-40, D-40, C-40, Bb-41, A-41, G-41, F-41, E-41, D-41, C-41, Bb-42, A-42, G-42, F-42, E-42, D-42, C-42, Bb-43, A-43, G-43, F-43, E-43, D-43, C-43, Bb-44, A-44, G-44, F-44, E-44, D-44, C-44, Bb-45, A-45, G-45, F-45, E-45, D-45, C-45, Bb-46, A-46, G-46, F-46, E-46, D-46, C-46, Bb-47, A-47, G-47, F-47, E-47, D-47, C-47, Bb-48, A-48, G-48, F-48, E-48, D-48, C-48, Bb-49, A-49, G-49, F-49, E-49, D-49, C-49, Bb-50, A-50, G-50, F-50, E-50, D-50, C-50, Bb-51, A-51, G-51, F-51, E-51, D-51, C-51, Bb-52, A-52, G-52, F-52, E-52, D-52, C-52, Bb-53, A-53, G-53, F-53, E-53, D-53, C-53, Bb-54, A-54, G-54, F-54, E-54, D-54, C-54, Bb-55, A-55, G-55, F-55, E-55, D-55, C-55, Bb-56, A-56, G-56, F-56, E-56, D-56, C-56, Bb-57, A-57, G-57, F-57, E-57, D-57, C-57, Bb-58, A-58, G-58, F-58, E-58, D-58, C-58, Bb-59, A-59, G-59, F-59, E-59, D-59, C-59, Bb-60, A-60, G-60, F-60, E-60, D-60, C-60, Bb-61, A-61, G-61, F-61, E-61, D-61, C-61, Bb-62, A-62, G-62, F-62, E-62, D-62, C-62, Bb-63, A-63, G-63, F-63, E-63, D-63, C-63, Bb-64, A-64, G-64, F-64, E-64, D-64, C-64, Bb-65, A-65, G-65, F-65, E-65, D-65, C-65, Bb-66, A-66, G-66, F-66, E-66, D-66, C-66, Bb-67, A-67, G-67, F-67, E-67, D-67, C-67, Bb-68, A-68, G-68, F-68, E-68, D-68, C-68, Bb-69, A-69, G-69, F-69, E-69, D-69, C-69, Bb-70, A-70, G-70, F-70, E-70, D-70, C-70, Bb-71, A-71, G-71, F-71, E-71, D-71, C-71, Bb-72, A-72, G-72, F-72, E-72, D-72, C-72, Bb-73, A-73, G-73, F-73, E-73, D-73, C-73, Bb-74, A-74, G-74, F-74, E-74, D-74, C-74, Bb-75, A-75, G-75, F-75, E-75, D-75, C-75, Bb-76, A-76, G-76, F-76, E-76, D-76, C-76, Bb-77, A-77, G-77, F-77, E-77, D-77, C-77, Bb-78, A-78, G-78, F-78, E-78, D-78, C-78, Bb-79, A-79, G-79, F-79, E-79, D-79, C-79, Bb-80, A-80, G-80, F-80, E-80, D-80, C-80, Bb-81, A-81, G-81, F-81, E-81, D-81, C-81, Bb-82, A-82, G-82, F-82, E-82, D-82, C-82, Bb-83, A-83, G-83, F-83, E-83, D-83, C-83, Bb-84, A-84, G-84, F-84, E-84, D-84, C-84, Bb-85, A-85, G-85, F-85, E-85, D-85, C-85, Bb-86, A-86, G-86, F-86, E-86, D-86, C-86, Bb-87, A-87, G-87, F-87, E-87, D-87, C-87, Bb-88, A-88, G-88, F-88, E-88, D-88, C-88, Bb-89, A-89, G-89, F-89, E-89, D-89, C-89, Bb-90, A-90, G-90, F-90, E-90, D-90, C-90, Bb-91, A-91, G-91, F-91, E-91, D-91, C-91, Bb-92, A-92, G-92, F-92, E-92, D-92, C-92, Bb-93, A-93, G-93, F-93, E-93, D-93, C-93, Bb-94, A-94, G-94, F-94, E-94, D-94, C-94, Bb-95, A-95, G-95, F-95, E-95, D-95, C-95, Bb-96, A-96, G-96, F-96, E-96, D-96, C-96, Bb-97, A-97, G-97, F-97, E-97, D-97, C-97, Bb-98, A-98, G-98, F-98, E-98, D-98, C-98, Bb-99, A-99, G-99, F-99, E-99, D-99, C-99, Bb-100, A-100, G-100, F-100, E-100, D-100, C-100, Bb-101, A-101, G-101, F-101, E-101, D-101, C-101, Bb-102, A-102, G-102, F-102, E-102, D-102, C-102, Bb-103, A-103, G-103, F-103, E-103, D-103, C-103, Bb-104, A-104, G-104, F-104, E-104, D-104, C-104, Bb-105, A-105, G-105, F-105, E-105, D-105, C-105, Bb-106, A-106, G-106, F-106, E-106, D-106, C-106, Bb-107, A-107, G-107, F-107, E-107, D-107, C-107, Bb-108, A-108, G-108, F-108, E-108, D-108, C-108, Bb-109, A-109, G-109, F-109, E-109, D-109, C-109, Bb-110, A-110, G-110, F-110, E-110, D-110, C-110, Bb-111, A-111, G-111, F-111, E-111, D-111, C-111, Bb-112, A-112, G-112, F-112, E-112, D-112, C-112, Bb-113, A-113, G-113, F-113, E-113, D-113, C-113, Bb-114, A-114, G-114, F-114, E-114, D-114, C-114, Bb-115, A-115, G-115, F-115, E-115, D-115, C-115, Bb-116, A-116, G-116, F-116, E-116, D-116, C-116, Bb-117, A-117, G-117, F-117, E-117, D-117, C-117, Bb-118, A-118, G-118, F-118, E-118, D-118, C-118, Bb-119, A-119, G-119, F-119, E-119, D-119, C-119, Bb-120, A-120, G-120, F-120, E-120, D-120, C-120, Bb-121, A-121, G-121, F-121, E-121, D-121, C-121, Bb-122, A-122, G-122, F-122, E-122, D-122, C-122, Bb-123, A-123, G-123, F-123, E-123, D-123, C-123, Bb-124, A-124, G-124, F-124, E-124, D-124, C-124, Bb-125, A-125, G-125, F-125, E-125, D-125, C-125, Bb-126, A-126, G-126, F-126, E-126, D-126, C-126, Bb-127, A-127, G-127, F-127, E-127, D-127, C-127, Bb-128, A-128, G-128, F-128, E-128, D-128, C-128, Bb-129, A-129, G-129, F-129, E-129, D-129, C-129, Bb-130, A-130, G-130, F-130, E-130, D-130, C-130, Bb-131, A-131, G-131, F-131, E-131, D-131, C-131, Bb-132, A-132, G-132, F-132, E-132, D-132, C-132, Bb-133, A-133, G-133, F-133, E-133, D-133, C-133, Bb-134, A-134, G-134, F-134, E-134, D-134, C-134, Bb-135, A-135, G-135, F-135, E-135, D-135, C-135, Bb-136, A-136, G-136, F-136, E-136, D-136, C-136, Bb-137, A-137, G-137, F-137, E-137, D-137, C-137, Bb-138, A-138, G-138, F-138, E-138, D-138, C-138, Bb-139, A-139, G-139, F-139, E-139, D-139, C-139, Bb-140, A-140, G-140, F-140, E-140, D-140, C-140, Bb-141, A-141, G-141, F-141, E-141, D-141, C-141, Bb-142, A-142, G-142, F-142, E-142, D-142, C-142, Bb-143, A-143, G-143, F-143, E-143, D-143, C-143, Bb-144, A-144, G-144, F-144, E-144, D-144, C-144, Bb-145, A-145, G-145, F-145, E-145, D-145, C-145, Bb-146, A-146, G-146, F-146, E-146, D-146, C-146, Bb-147, A-147, G-147, F-147, E-147, D-147, C-147, Bb-148, A-148, G-148, F-148, E-148, D-148, C-148, Bb-149, A-149, G-149, F-149, E-149, D-149, C-149, Bb-150, A-150, G-150, F-150, E-150, D-150, C-150, Bb-151, A-151, G-151, F-151, E-151, D-151, C-151, Bb-152, A-152, G-152, F-152, E-152, D-152, C-152, Bb-153, A-153, G-153, F-153, E-153, D-153, C-153, Bb-154, A-154, G-154, F-154, E-154, D-154, C-154, Bb-155, A-155, G-155, F-155, E-155, D-155, C-155, Bb-156, A-156, G-156, F-156, E-156, D-156, C-156, Bb-157, A-157, G-157, F-157, E-157, D-157, C-157, Bb-158, A-158, G-158, F-158, E-158, D-158, C-158, Bb-159, A-159, G-159, F-159, E-159, D-159, C-159, Bb-160, A-160, G-160, F-160, E-160, D-160, C-160, Bb-161, A-161, G-161, F-161, E-161, D-161, C-161, Bb-162, A-162, G-162, F-162, E-162, D-162, C-162, Bb-163, A-163, G-163, F-163, E-163, D-163, C-163, Bb-164, A-164, G-164, F-164, E-164, D-164, C-164, Bb-165, A-165, G-165, F-165, E-165, D-165, C-165, Bb-166, A-166, G-166, F-166, E-166, D-166, C-166, Bb-167, A-167, G-167, F-167, E-167, D-167, C-167, Bb-168, A-168, G-168, F-168, E-168, D-168, C-168, Bb-169, A-169, G-169, F-169, E-169, D-169, C-169, Bb-170, A-170, G-170, F-170, E-170, D-170, C-170, Bb-171, A-171, G-171, F-171, E-171, D-171, C-171, Bb-172, A-172, G-172, F-172, E-172, D-172, C-172, Bb-173, A-173, G-173, F-173, E-173, D-173, C-173, Bb-174, A-174, G-174, F-174, E-174, D-174, C-174, Bb-175, A-175, G-175, F-175, E-175, D-175, C-175, Bb-176, A-176, G-176, F-176, E-176, D-176, C-176, Bb-177, A-177, G-177, F-177, E-177, D-177, C-177, Bb-178, A-178, G-178, F-178, E-178, D-178, C-178, Bb-179, A-179, G-179, F-179, E-179, D-179, C-179, Bb-180, A-180, G-180, F-180, E-180, D-180, C-180, Bb-181, A-181, G-181, F-181, E-181, D-181, C-181, Bb-182, A-182, G-182, F-182, E-182, D-182, C-182, Bb-183, A-183, G-183, F-183, E-183, D-183, C-183, Bb-184, A-184, G-184, F-184, E-184, D-184, C-184, Bb-185, A-185, G-185, F-185, E-185, D-185, C-185, Bb-186, A-186, G-186, F-186, E-186, D-186, C-186, Bb-187, A-187, G-187, F-187, E-187, D-187, C-187, Bb-188, A-188, G-188, F-188, E-188, D-188, C-188, Bb-189, A-189, G-189, F-189, E-189, D-189, C-189, Bb-190, A-190, G-190, F-190, E-190, D-190, C-190, Bb-191, A-191, G-191, F-191, E-191, D-191, C-191, Bb-192, A-192, G-192, F-192, E-192, D-192, C-192, Bb-193, A-193, G-193, F-193, E-193, D-193, C-193, Bb-194, A-194, G-194, F-194, E-194, D-194, C-194, Bb-195, A-195, G-195, F-195, E-195, D-195, C-195, Bb-196, A-196, G-196, F-196, E-196, D-196, C-196, Bb-197, A-197, G-197, F-197, E-197, D-197, C-197, Bb-198, A-198, G-198, F-198, E-198, D-198, C-198, Bb-199, A-199, G-199, F-199, E-199, D-199, C-199, Bb-200, A-200, G-200, F-200, E-200, D-200, C-200, Bb-201, A-201, G-201, F-201, E-201, D-201, C-201, Bb-202, A-202, G-202, F-202, E-202, D-202, C-202, Bb-203, A-203, G-203, F-203, E-203, D-203, C-203, Bb-204, A-204, G-204, F-204, E-204, D-204, C-204, Bb-205, A-205, G-205, F-205, E-205, D-205, C-205, Bb-206, A-206, G-206, F-206, E-206, D-206, C-206, Bb-207, A-207, G-207, F-207, E-207, D-207, C-207, Bb-208, A-208, G-208, F-208, E-208, D-208, C-208, Bb-209, A-209, G-209, F-209, E-209, D-209, C-209, Bb-210, A-210, G-210, F-210, E-210, D-210, C-210, Bb-211, A-211, G-211, F-211, E-211, D-211, C-211, Bb-212, A-212, G-212, F-212, E-212, D-212, C-212, Bb-213, A-213, G-213, F-213, E-213, D-213, C-213, Bb-214, A-214, G-214, F-214, E-214, D-214, C-214, Bb-215, A-215, G-215, F-215, E-215, D-215, C-215, Bb-216, A-216, G-216, F-216, E-216, D-216, C-216, Bb-217, A-217, G-217, F-217, E-217, D-217, C-217, Bb-218, A-218, G-218, F-218, E-218, D-218, C-218, Bb-219, A-219, G-219, F-219, E-219, D-219, C-219, Bb-220, A-220, G-220, F-220, E-220, D-220, C-220, Bb-221, A-221, G-221, F-221, E-221, D-221, C-221, Bb-222, A-222, G-222, F-222, E-222, D-222, C-222, Bb-223, A-223, G-223, F-223, E-223, D-223, C-223, Bb-224, A-224, G-224, F-224, E-224, D-224, C-224, Bb-225, A-225, G-225, F-225, E-225, D-225, C-225, Bb-226, A-226, G-226, F-226, E-226, D-226, C-226, Bb-227, A-227, G-227, F-227, E-227, D-227, C-227, Bb-228, A-228, G-228, F-228, E-228, D-228, C-228, Bb-229, A-229, G-229, F-229, E-229, D-229, C-229, Bb-230, A-230, G-230, F-230, E-230, D-230, C-230, Bb-231, A-231, G-231, F-231, E-231, D-231, C-231, Bb-232, A-232, G-232, F-232, E-232, D-232, C-232, Bb-233, A-233, G-233, F-233, E-233, D-233, C-233, Bb-234, A-234, G-234, F-234, E-234, D-234, C-234, Bb-235, A-235, G-235, F-235, E-235, D-235, C-235, Bb-236, A-236, G-236, F-236, E-236, D-236, C-236, Bb-237, A-237, G-237, F-237, E-237, D-237, C-237, Bb-238, A-238, G-238, F-238, E-238, D-238, C-238, Bb-239, A-239, G-239, F-239, E-239, D-239, C-239, Bb-240, A-240, G-240, F-240, E-240, D-240, C-240, Bb-241, A-241, G-241, F-241, E-241, D-241, C-241, Bb-242, A-242, G-242, F-242, E-242, D-242, C-242, Bb-243, A-243, G-243, F-243, E-243, D-243, C-243, Bb-244, A-244, G-244, F-244, E-244, D-244, C-244, Bb-245, A-245, G-245, F-245, E-245, D-245, C-245, Bb-246, A-246, G-246, F-246, E-246, D-246, C-246, Bb-247, A-247, G-247, F-247, E-247, D-247, C-247, Bb-248, A-248, G-248, F-248, E-248, D-248, C-248, Bb-249, A-249, G-249, F-249, E-249, D-249, C-249, Bb-250, A-250, G-250, F-250, E-250, D-250, C-250, Bb-251, A-251, G-251, F-251, E-251, D-251, C-251, Bb-252, A-252, G-252, F-252, E-252, D-252, C-252, Bb-253, A-253, G-253, F-253, E-253, D-253, C-253, Bb-254, A-254, G-254, F-254, E-254, D-254, C-254, Bb-255, A-255, G-255, F-255, E-255, D-255, C-255, Bb-256, A-256, G-256, F-256, E-256, D-256, C-256, Bb-257, A-257, G-257, F-257, E-257, D-257, C-257, Bb-258, A-258, G-258, F-258, E-258, D-258, C-258, Bb-259, A-259, G-259, F-259, E-259, D-259, C-259, Bb-260, A-260, G-260, F-260, E-260, D-260, C-260, Bb-261, A-261, G-261, F-261, E-261, D-261, C-261, Bb-262, A-262, G-262, F-262, E-262, D-262, C-262, Bb-263, A-263, G-263, F-263, E-263, D-263, C-263, Bb-264, A-264, G-264, F-264, E-264, D-264, C-264, Bb-265, A-265, G-265, F-265, E-265, D-265, C-265, Bb-266, A-266, G-266, F-266, E-266, D-266, C-266, Bb-267, A-267, G-267, F-267, E-267, D-267, C-267, Bb-268, A-268, G-268, F-268, E-268, D-268, C-268, Bb-269, A-269, G-269, F-269, E-269, D-269, C-269, Bb-270, A-270, G-270, F-270, E-270, D-270, C-270, Bb-271, A-271, G-271, F-271, E-271, D-271, C-271, Bb-272, A-272, G-272, F-272, E-272, D-272, C-272, Bb-273, A-273, G-273, F-273, E-273, D-273, C-273, Bb-274, A-274, G-274, F-274, E-274, D-274, C-274, Bb-275, A-275, G-275, F-275, E-275, D-275, C-275, Bb-276, A-276, G-276, F-276, E-276, D-276, C-276, Bb-277, A-277, G-277, F-277, E-277, D-277, C-277, Bb-278, A-278, G-278, F-278, E-278, D-278, C-278, Bb-279, A-279, G-279, F-279, E-279, D-279, C-279, Bb-280, A-280, G-280, F-280, E-280, D-280, C-280, Bb-281, A-281, G-281, F-281, E-281, D-281, C-281, Bb-282, A-282, G-282, F-282, E-282, D-282, C-282, Bb-283, A-283, G-283, F-283, E-283, D-283, C-283, Bb-284, A-284, G-284, F-284, E-284, D-284, C-284, Bb-285, A-285, G-285, F-285, E-285, D-285, C-285,

## YOUTH SYMPHONY ORCHESTRA

1. Prepare a solo or etude on the percussion instrument of your choice (snare drum, timpani, or keyboard percussion) that demonstrates your greatest skill, talent, and confidence. The solo/etude should be 1 minute in length. Etudes from All-State, District, SEIBA, SEISTA, or equivalent are acceptable.

### 2. Demonstrate techniques on the following instruments:

-Snare Drum: Play a multiple bounce (orchestral) roll at the performer's maximum, controlled speed from soft to loud to soft. Play a double stroke (rudimentary) roll from slow to fast to slow at a constant volume.

-Keyboard Percussion: Play 2-octave C and D major scales, ascending and descending, in eighth notes at quarter note = 100. Play a chromatic scale the full range of the instrument, ascending and descending, in eighth notes at quarter note = 100.

-Timpani: Perform a glissando roll ascending and descending

-Crash Cymbals: Perform crashes at various volume levels.

### 3. Prepare the required excerpt(s) below.

Aaron Copland, "Celebration" from Billy the Kid, **Xylophone**, 4 measures after rehearsal 45 to 46.

*Allegro 2/2*

The image displays a musical score for the Xylophone part of Aaron Copland's "Celebration" from the film score "Billy the Kid". The score is written on three staves in treble clef with a key signature of two sharps (F# and C#). The tempo is marked "Allegro 2/2". The first staff begins with a "Xylo." instruction and a "secco" marking. It features a dynamic marking of *mf* (mezzo-forte) that transitions to *f* (forte). The second staff continues the melodic line with a *ff* (fortissimo) dynamic marking. The third staff shows a rhythmic pattern of eighth notes, with a circled rehearsal mark "46" at the end. The notation includes various articulations such as accents and slurs.

Johannes Brahms, Tragic Overture, **Timpani**, measure 377 to the end. *Allegro, ma non troppo* 2/2

bd. 3 6 6 3

*mf* *ff*

**1**

*f* *f*

**2**

*sf* *sf* *sf* *sf*

**3**

*un poco sost.* *Cl.*

**4**

*pp*

*in tempo*

*f cresc.* *ff*

Isaac Albéniz, arr. Frübeck, "Castilla" from Suite Espagnole, **Castanets**, beginning to measure 26.

This Excerpt is protected by copyright and will be supplied separately. If you are registered for lessons, you will receive an email from Chelsea Sammons at the time to let you know they are available.